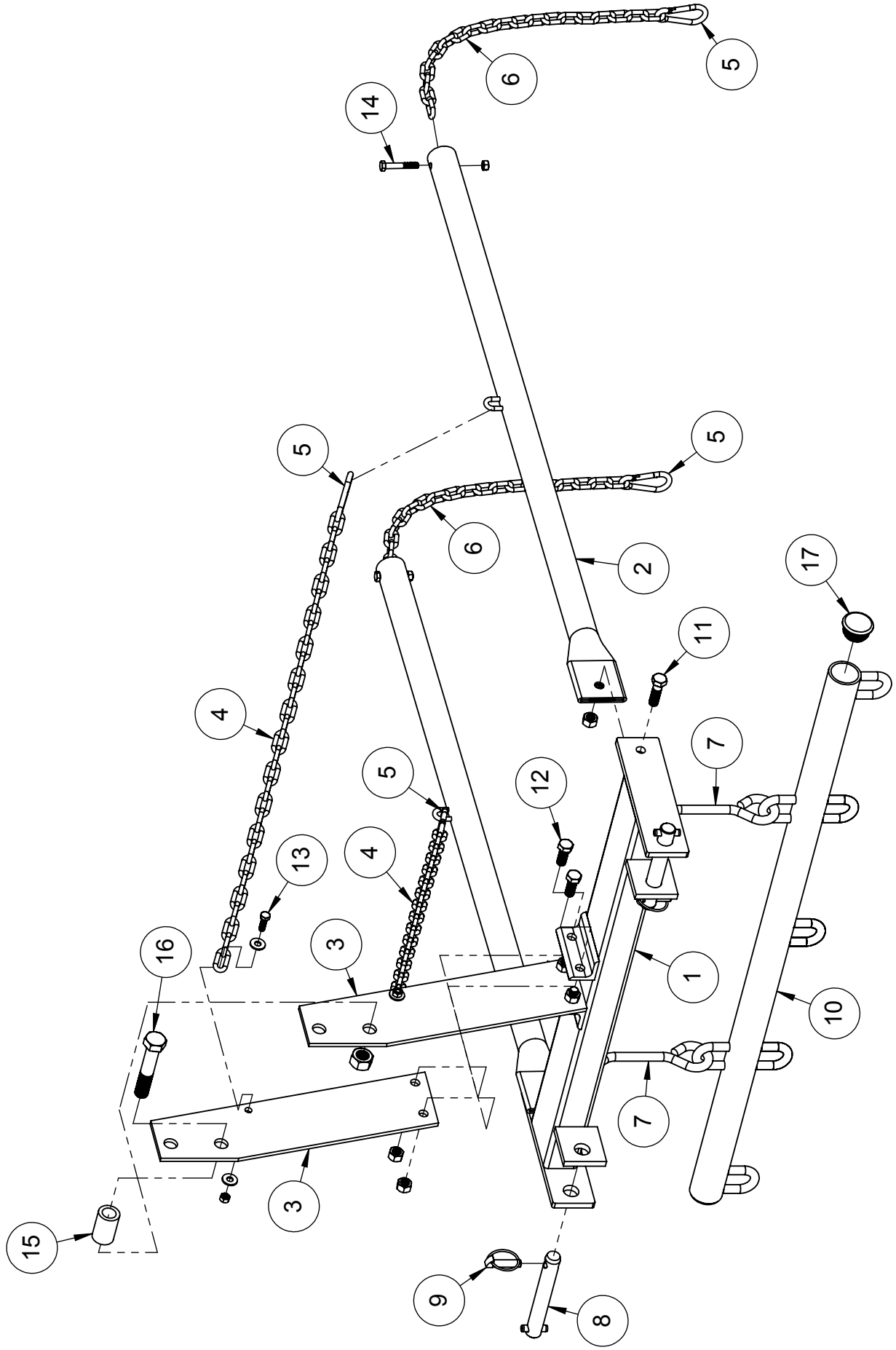


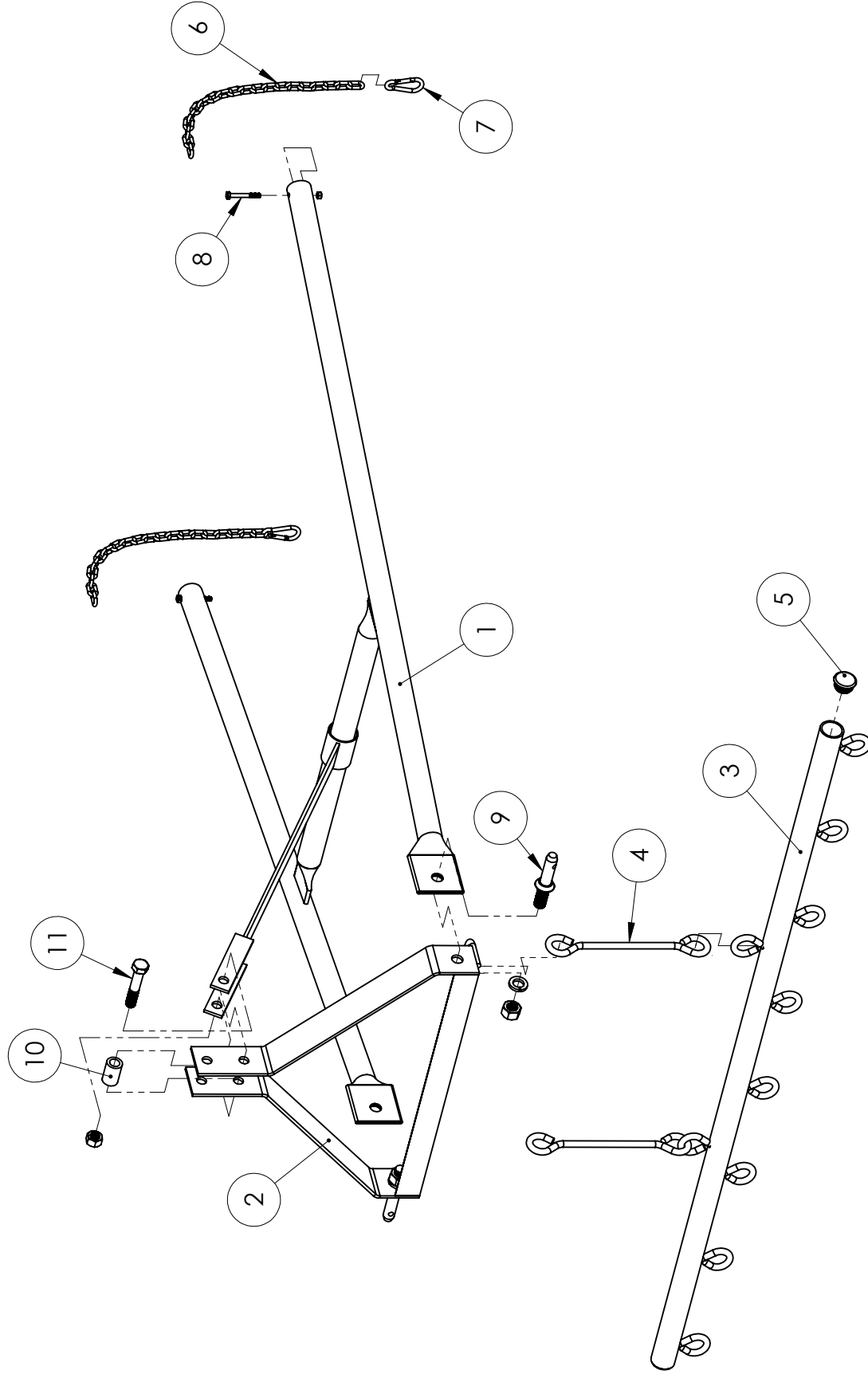
**302P HARROW CARRIER ASSEMBLY**  
(G4-3P)



**302P HARROW CARRIER ASSEMBLY**  
(G4-3P)

ITEM	QTY	PART NO	DESCRIPTION
1	1	R4-100	Carrier Frame Weldment
2	2	R4-101	Pipe Hanger
3	2	302P-1	Top Link Plate
4	2	R4-103	3/16" Chain 30-1/2" Long
5	4	R6-103	5/16" Spring Snap
6	2	R6-102	3/16" Chain 15" Long
7	2	302P-11	Drawbar Link
8	2	P7234	Cat I Clevis Pin
9	2	P791	Lynch Pin
10	1	R4-104	4' Drawbar Weldment w/ 2-Drawbar Links
11	2	R4-105	1/2" x 1-3/4" NC Gr. 5 Cap Screw w/Nylock Nut
12	4	R4-106	1/2" x 1-1/4" NC Gr. 5 Cap Screw w/Nylock Nut
13	2	R4-107	5/16" x 1" NC Gr. 5 Cap Screw w/2-Flat Washers & Nylock Nuts
14	2	R4-102	5/16" x 2" NC Gr. 5 Cap Screw w/Nylock Nut
15	1	R6-107	Top Link Bushing
16	1	R6-108	3/4" x 4" NC Gr. 5 Cap Screw w/Nylock Nut
17	2	R6-105	Drawbar Cap
18	1	R4-300	Hardware Kit for 302P (G4-3P)

# 303P/306P HARROW CARRIER ASSEMBLY



**303P, 306P HARROW CARRIER ASSEMBLY**  
**(G6-3P, G8-3P)**

ITEM	QTY	PART NO	DESCRIPTION
1	1	R6-205	6' Carrier Frame Weldment
	1	R8-210	8' Carrier Frame Weldment (not shown)
2	1	R6-200	Carrier A-Frame Weldment (both models)
3	1	R6-101	6' Carrier Draw Bar Complete w/2-Drawbar Links & 2-Drawbar Caps
	1	R8-111	8' Carrier Draw Bar Complete w/2-Drawbar Links & 2-Drawbar Caps (not shown)
4	2	R6-104	Drawbar Link
5	2	R6-105	Drawbar Cap
6	2	R6-102	3/16" Chain
7	2	R6-103	5/16" Spring Snap
8	2	R6-106	5/16" x 2-1/2" NC Gr. 5 Cap Screw w/Nylock Nut
9	2	P728	3 Pt. Draw Pin
10	1	R6-107	Top Link Bushing
		R6-108	3/4" x 4" NC Gr. 5 Cap Screw w/Nylock Nut
		R6-300	Hardware Kit for 303P (G6-3P)
11	1	R8-300	Hardware Kit for 306P (G8-3P)